

# FIRST ANNUAL MEETING

11<sup>th</sup>-12<sup>th</sup> JUNE 2015 - BERLIN, GERMANY

## I<sup>ST</sup> DAY

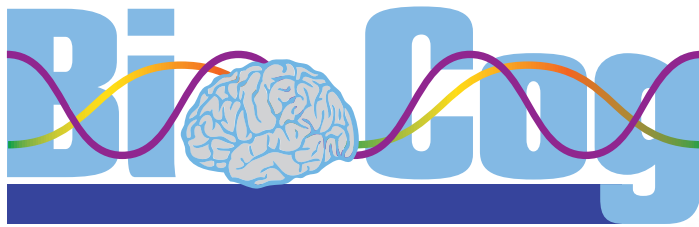
- 11.00-11.30 **Registration and welcome coffee**
- 11.30-11.45 **Overview on the BioCog project**  
Georg Winterer - CHARITÉ, Germany
- 11.45-13.00 **Clinical Study - Progresses within WPI**  
*Chair Claudia Spies - Charité, Germany*  
Claudia Spies - Charité, Germany and Arjen Slioter, UMCU, The Netherlands (30 min)  
Friedrich Borchers - Charité, Germany (10 minutes)  
Anika Müller, Charité - Germany (10 minutes)  
Discussion, tasks allocation and deadlines by the project coordinator Georg Winterer (20 minutes)
- 13.00-14.00 *Lunch*
- 14.00-16.15 **Neuroimaging Biomarkers - Progresses within WP2**  
*Chair Jeroen Hendrikse - UMCU, The Netherlands*  
Ilse Kant, - UMCU, The Netherlands (10 min)  
Simone Montfort - UMCU, The Netherlands (10 min)  
Kwaku Ofori - Charité, Germany (10 minutes)  
Claudia Friedrich - Charité, Germany (10 minutes)  
Norman Zacharias - Charité, Germany (10 minutes)  
Emmanuel Stamatakis - CHU (20 minutes)  
Simone Kühn - MPI für Bildungsforschung (10 minutes)  
Jürgen Gallinat - Universität Hamburg, Germany (10 minutes)  
Georg Winterer - CHARITÉ, Germany (10 minutes)  
Discussion, tasks allocation and deadlines by the project coordinator Georg Winterer (25 minutes)
- 16.15-16.45 *Coffee break*
- 16.45-18.15 **Steering Committee Meeting**
- 18.15 **Close session and adjourn**
- 19.30 *Networking Dinner at Café am Neuen See*



MEETING VENUE  
HOTEL GRENZFALL  
Ackerstraße 136 -13355 Berlin (Germany)

Graphic project by:





# FIRST ANNUAL MEETING

11<sup>th</sup>-12<sup>th</sup> JUNE 2015 - BERLIN, GERMANY

## 2<sup>ND</sup> DAY

- 09.00-09.30 **Bioinformatics – Progresses within WP4**  
*Chair: Roland Krause - UL, Luxembourg*  
Roland Krause - UL, Luxembourg (20 minutes)  
Discussion, tasks allocation and deadlines by the project coordinator Georg Winterer (10 minutes)
- 09.30-10.30 **Progresses of WP5-6 Project Management, dissemination and exploitation**  
*Chair Georg Winterer - CHARITÉ, Germany*  
Michela Renzulli - ALTA, Italy (20 minutes)  
Malte Pietzsch and Simon Weber - Cellogic, Germany (15 minutes)  
**Discussion, tasks allocation and deadlines by the project coordinator (25 minutes)**
- 10.30-11.00 *Coffee break*
- 11.00-12.00 **Molecular Biomarkers - Progresses within WP3**  
*Chair Tobias Pischon - MDC, Germany*  
Tobias Pischon - MDC, Germany (10 minutes)  
Diana Boraschi - CNR, Italy (15 minutes)  
Peter Nürnberg - ATLAS, Germany (15 minutes)  
Thomas Dschietzig - ID (10 minutes)  
Discussion, tasks allocation and deadlines by the project coordinator Georg Winterer (10 minutes)
- 12.00-13.15 *Lunch*
- 13.15-15.00 **Discussion on the following topics**  
*Chair Georg Winterer - CHARITÉ, Germany*
- **Fields of Interest**
  - **Publications/Authorships**
  - **IMI (Innovative Medicine Initiative) future topics**
  - **Any other business**
- 15.00 **Close session** and *Coffee break*



MEETING VENUE  
HOTEL GRENZFALL  
Ackerstraße 136 -13355 Berlin (Germany)

Graphic project by:

